

Quick Facts

Sources:
FY 2010 data

- Total patients: 232,477
- Total patient visits: 827,678
- Bed count: 534 (560 licensed)
- Patients from Oregon: 89 percent
- Patients from outside Portland tri-county area: 48 percent
- Faculty: 2,045
- Enrolled students: 2,721
- Degrees awarded: 946
- Principal investigators: 1,100
- Basic science and applied research projects: 4,500
- Community service programs: approximately 200
- Employees: 13,542
- Annual operating budget: \$1.9 billion
- State appropriation: 2.01 percent
- Philanthropy: \$78.5 million
- Grants and awards: \$391.7 million
- Awards from out of state: 94 percent

20-Year Facilities Master Plan



Facilities Master Plan Vision & Goals

To create an achievable, flexible and fiscally sound Facilities Master Plan to guide OHSU capital planning, site decisions and space plans over the next 20 years.

ACHIEVABLE

- Align facilities plan with business, financial and strategic goals
- Optimize existing space before building new facilities
- Aggressively manage debt and operating cost burden

FLEXIBLE

- Phase development over time
- Design for versatility
- Integrate modular components

BALANCED

- Enhance environmental sustainability
- Exist in harmony with neighbors
- Protect natural resources

INTEGRATED

- Foster collaboration by enhancing strategic adjacencies between programs
- Optimize connections between buildings and campuses
- Integrate open space and informal gathering areas

ACCESSIBLE

- Remove barriers to physical accessibility
- Improve campus wayfinding
- Create a distinct sense of place



OHSU/OUS Collaborative Life Sciences Building and Skourtes Tower

1900	10	20	30	40	50	60	70	80	90	2000	10
1913	1922	1923	1931	1949	1954	1960	1972	1983	1990	2003	2011
Willamette University and the University of Oregon merge programs to form the University of Oregon Medical School.	Second phase of Mackenzie Hall is completed.	The new Multnomah County Hospital, built for \$1.1 million, opens (now Multnomah Pavilion).	The University's first outpatient clinic building opens, now Sam Jackson Hall.	Baird Hall opens to house the department of Physiology and administrative offices.	Crippled Children's Division opens, now the Child Development and Rehabilitation Center (CDRC).	Student Activities Center is built, now the OHSU Student Center. An indoor pool was added in 1980.	Basic Science Building is completed. The East wing of OHSU Hospital opens.	Shriners Children's Hospital opens on land leased from OHSU.	Dotter Institute is established at OHSU to honor the pioneer of interventional radiology.	Marquam Hill is designated a "plan district" by the Portland City Council.	The OHSU/OUS Collaborative Life Sciences Building and Skourtes Tower groundbreaking on the Schnitzer Campus
1919	1924	1926	1939	1956	1962	1963	1973	1987	1991	2004	
The University of Oregon Medical School moves from downtown Portland to its present location on Marquam Hill in southwest Portland.	Oregon Journal publisher Sam Jackson donates 88 acres adjacent to the University for "healing of the sick and crippled and recreation of the public and play of children."	25 acres of the Sam Jackson donation is deeded to the United States Government as the site for a veterans hospital.	OHSU Library is opened (now OHSU Auditorium).	The University of Oregon Dental School moves from Northeast Oregon Street to its present location on Marquam Hill.	Medical Research Building (MRB) complete.	Oregon Regional Primate Research Center opens on 163 acres west of Portland.	Multnomah County Hospital is transferred from the county to the state and becomes Multnomah Pavilion (MNP) and the Medical School Hospital becomes University Hospital (south), now OHSU Hospital (OHS).	Construction is completed on the Vollum Institute for Advanced Biomedical Research.	Casey Eye Institute opens on Marquam Hill.	The Schnitzer Investment Corporation donates nearly 20 acres of riverfront property in South Waterfront to OHSU.	
	1927				1969				1992	2005	
	Emma Jones Hall opens as a dormitory for nursing students.	Doernbecher Children's Hospital opens in what is now Dilleshunt Hall. The first children's hospital in the Northwest is funded from a \$200,000 donation from furniture manufacturer Frank Doernbecher.	Third and final phase of Mackenzie Hall completed (the western wing).		Multnomah County Hospital adds a six-story wing to the north.				The Biomedical Information Communication Center (BICC) is completed.	Biomedical Research Building (BRB) opens on Marquam Hill.	
									1993	2006	
									The VAMC skybridge is completed.	Center for Health & Healing (CHH), one of Oregon's greenest buildings, opens on the South Waterfront.	
									1995		
									OHSU becomes a public corporation and separates from the Oregon State System of Higher Education.	City of Portland's Aerial Tram begins operating between OHSU's Marquam Hill Campus and South Waterfront.	
									1998	2008	
									The Mark O. Hatfield Research Center is dedicated.	Peter O. Kohler Pavilion opens as state-of-the-art patient care facility on Marquam Hill.	
									Doernbecher Children's Hospital is opened.	A gift of \$100 million from Phil Knight helps to form the OHSU Knight Cancer Institute.	

About OHSU

Oregon Health & Science University brings together healing, teaching and discovery to improve the health and well-being of Oregonians. When scientists and doctors, educators and nurses, dentists and pharmacists work side by side and supported by innovative facilities management, the results are extraordinary.

Total square feet of facilities: 7.1 million sf

- Marquam Hill Campus: 118 acres
- West Campus: 237 acres
- South Waterfront:
 - Central District: 7 acres
 - Schnitzer Campus: 18 acres
- Other owned sites: 3.3 acres

Contact Information:

Campus Planning,
Development and Real Estate
www.ohsu.edu/cpdre
503-494-2454
cpdre@ohsu.edu

OHSU Economic Impact

According to a study done by EcoNorthwest in 2010, using 2007 data:

- OHSU's operations generated, directly and indirectly, more than \$3.8 billion in total gross output in Oregon and accounted for the creation of nearly 35,000 jobs.
- Every net addition to OHSU's workforce creates another 1.4 additional jobs downstream in the community.
- Economic output in Oregon would decrease by almost \$2.4 billion and by nearly 21,000 jobs if OHSU did not exist. About a third of OHSU's nearly \$1 billion in patient care revenue would be lost to the region entirely because the state's most complex patients likely would either forgo optimal care or go to medical centers out of state.



SCHNITZER CAMPUS

SOUTH WATERFRONT CENTRAL DISTRICT

MARQUAM HILL CAMPUS

Potential OHSU facility and campus development

OHSU

20-Year Facilities Master Plan 2011-2030

Master Plan Themes

The following nine themes provide a general framework for guiding OHSU campus growth and development. The first four relate to campus areas for patient care, education, research and support services. Themes five through seven relate to campus design and open space. The final two themes support OHSU's leadership in environmental sustainability.



1 Preserve remaining development capacity on Marquam Hill for hospital expansion, including the School of Dentistry site.



2 Implement the Schnitzer Campus Master Plan and relocate all academic schools and programs to the new campus over the next 25 years.



3 Preserve land in South Waterfront near the Center for Health and Healing and the Tram for outpatient expansion and to centralize OHSU support services in one location.



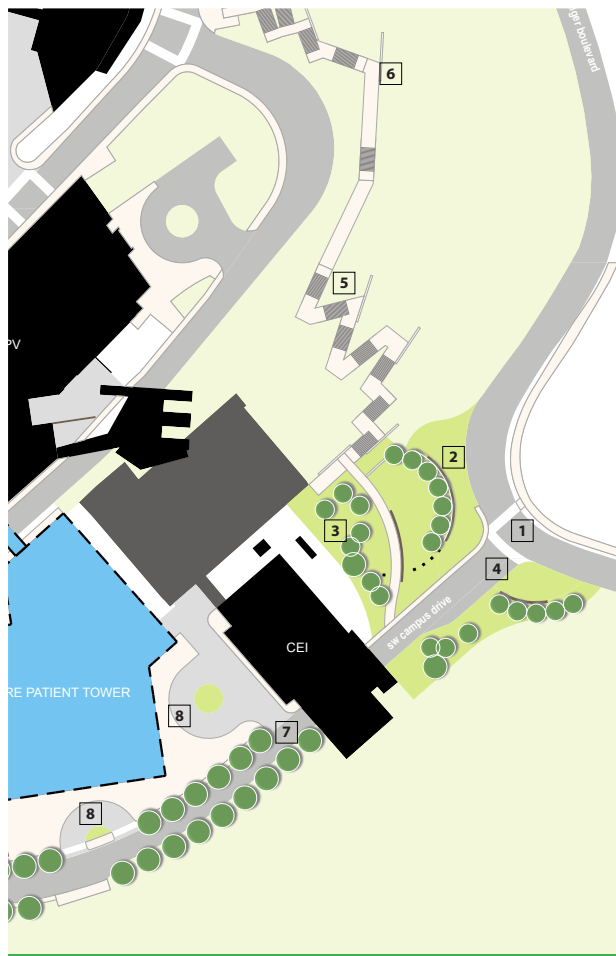
4 Focus research activities on three campuses: Marquam Hill, Schnitzer and the West Campus. Limit future research growth elsewhere due to the cost of research support and core facilities.



5 Link facility expansion directly with building demolition and backfill in order to address significant deferred maintenance costs and to integrate open space.



6 Seek opportunities for "campus repair" on Marquam Hill by developing complimentary relationships between buildings, landscaped areas and plazas.



7 Enhance the intersection of Campus Drive and Terwilliger Blvd. to become the official public entrance to OHSU's Marquam Hill Campus.



8 Continue efforts to connect OHSU campuses and facilities to regional high capacity transit network.



9 Achieve a high level of environmental sustainability with all campus development and facility projects.