



BRIDGE MEADOWS

BRIDGING THE GENERATIONS ONE COMMUNITY AT A TIME



CREATING MEANINGFUL RELATIONSHIPS



THE NEED



ABOUT US

Founded in 2004, Bridge Meadows builds and sustains intergenerational neighborhoods that bring youth formerly in foster care, their adoptive parents and elders together. In 2011, we welcomed our first families and elders home!





BLUEPRINT

Hope Meadows/Generations of Hope
Brenda Eheart , Ph.D.

PHILOSOPHICAL PRINCIPLES

Residents of an intergenerational community, including those whose social challenge provides the organizing focus of the community, are viewed not as problems-to-be-managed, but as ordinary people requiring the same embeddedness in family and community that we would want for ourselves.

Residents have enduring capacity to care. Given the opportunity, ordinary people will care for one another in ways, and to a degree, that go beyond the scope of traditional interventions.



PARADIGM SHIFT

1 Model that addresses 3 challenges, simultaneously

Foster Care
Seniors
Housing

From service provider to community partner

Relationships and connection are the vehicles of healing & intervention





PHILOSOPHY

All residents of an intergenerational community, children, adults, and elders are viewed as ordinary people requiring the same connection in family and community that we would want for ourselves.

Youth in foster care find permanent homes & greater academic success

Adoptive parents gain skills & support to parent with confidence

Elders find new meaning & purpose





GUIDING PRINCIPLES

Individuals value meaning and purpose, and this happens best in an environment that fosters belonging and connection.

The Intergenerational Community addresses and unites around a specific social purpose.

The Intergenerational Community is healing agent, providing the key source of support and service.

Given the Intergenerational Community is the form of intervention, staff must discern when to coach, collaborate, and lead.

Community members are experts in their lives – their ideas and perspectives inform activities that lead to positive outcomes.



THE POWER OF CONNECTION

Social Relationships impact well being

Purposeful engagement

Elders, children and parents flourish with social connections

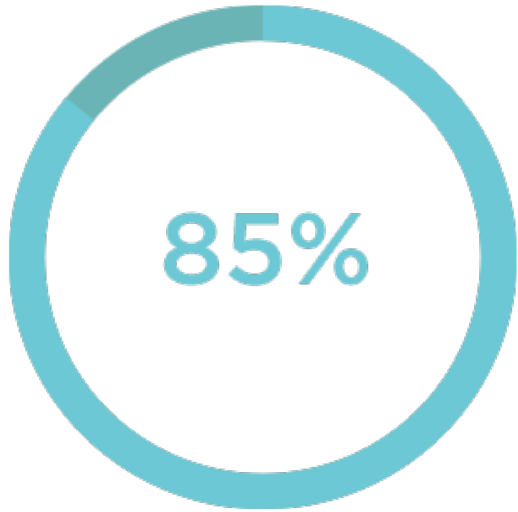
Enhancing the connection with a social purpose

The community as an intervention



THE EXPERIENCE BENEFITS EACH GENERATION IN THE WAYS THEY NEED IT MOST.





of elders say there's more meaning and purpose in their lives.



of kids go to school regularly and 85% find greater academic success.



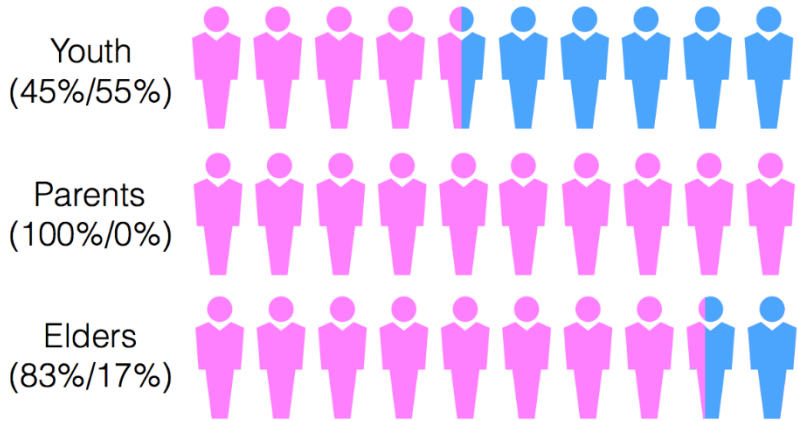
of parents are more confident parenting youth formerly in foster care.



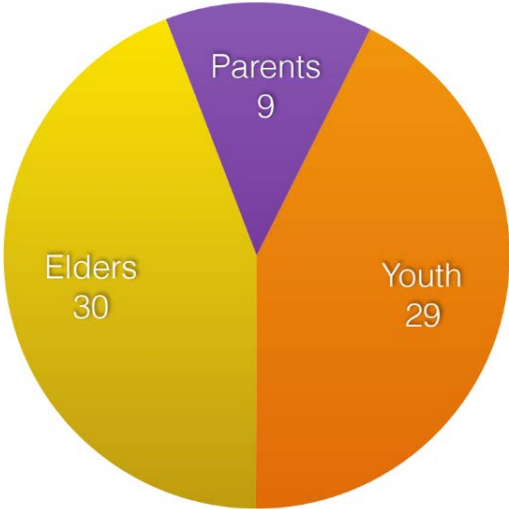
WHEN PEOPLE SUPPORT EACHOTHER, LIFE WORKS.

COMMUNITY DEMOGRAPHICS

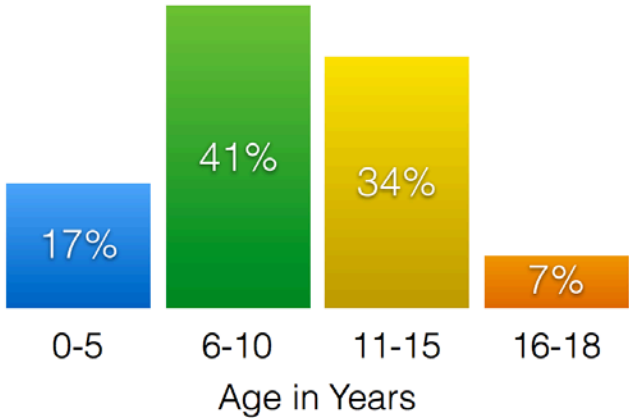
Gender Breakdown



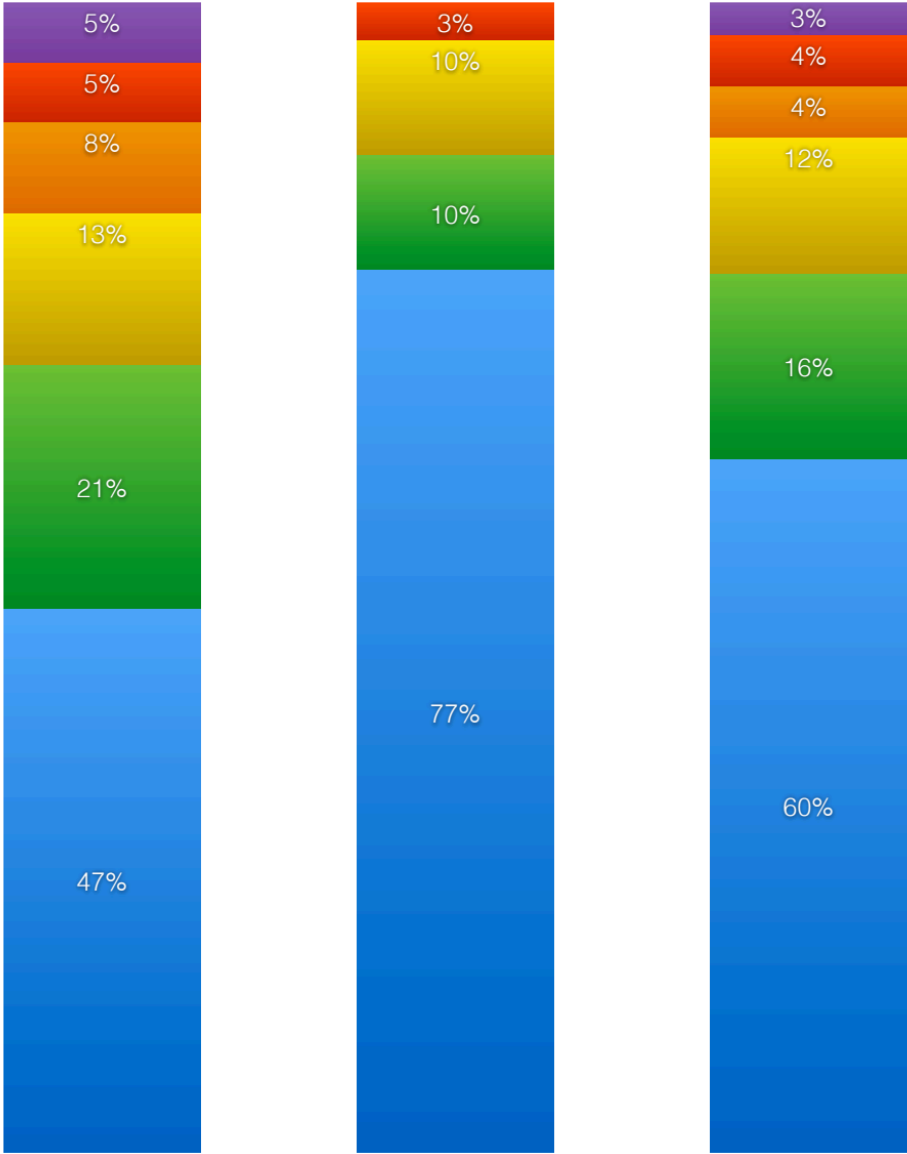
Three Generations



Age of Youth



Ethnicity



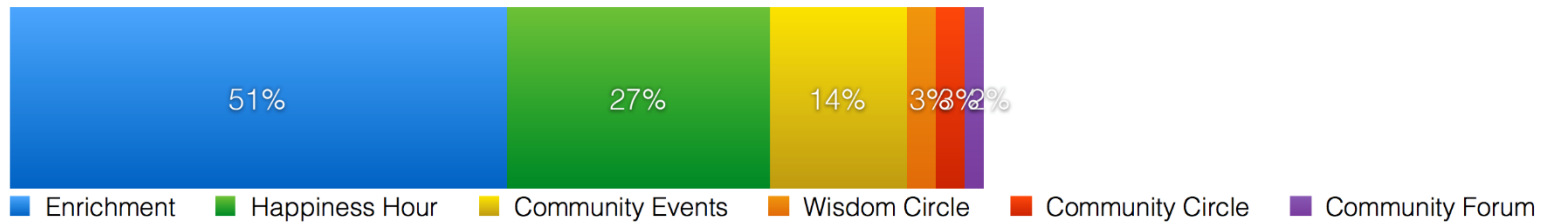
Parent/Youth

Elder

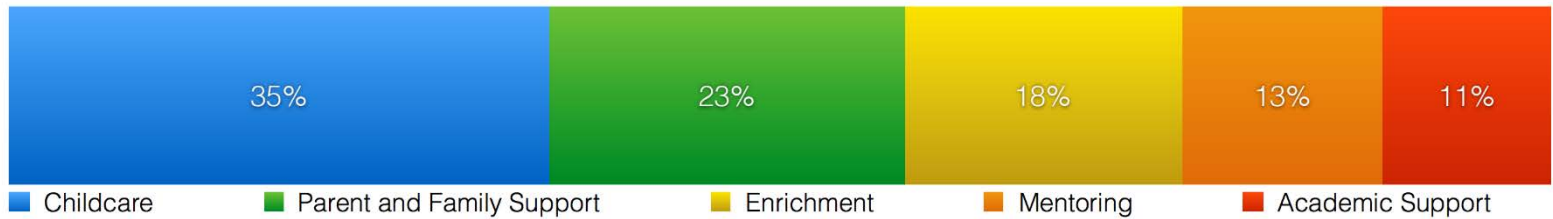
Combined



Neighbors Supporting Neighbors: 4919 hours/year (35% of total hours)



Elders Supporting Families: 7874 hours/year (55% of total hours)



Elders Supporting Elders: 1414 hours/year (10% of total hours)





FUNDING

REAL ESTATE DEVELOPMENT & PROGRAM OPERATIONS

Public

Private

Operating



KEY ELEMENTS OF SUCCESS

Political & Community Support

Securing private and public financing support

Strong Real Estate Development Team

Securing Site

Clinical Expertise

Social Purpose



BUILDING COMMUNITY



NORTH PORTLAND

30 Youth (25 former foster youth)
9 Adoptive Parents
30 Elders with limited means



BEAVERTON

32 Elder apartments
9 Family townhomes



NEW MEADOWS

10 Studios
4 One-bedroom
For young adults ages 18-24
who have aged out of the
foster care system.



SHARING OUR SUCCESS



ONE FAMILY'S STORY



A BRIDGE MEADOWS EXTENDED FAMILY



THANK YOU

Derenda Schubert, Ph.D.
Executive Director
dschubert@bridgemedows.org
503.953.1100

8502 N. Wayland Ave.
Portland, Oregon 97203
www.bridgemedows.org





BRIDGE MEADOWS

BRIDGING THE GENERATIONS ONE COMMUNITY AT A TIME