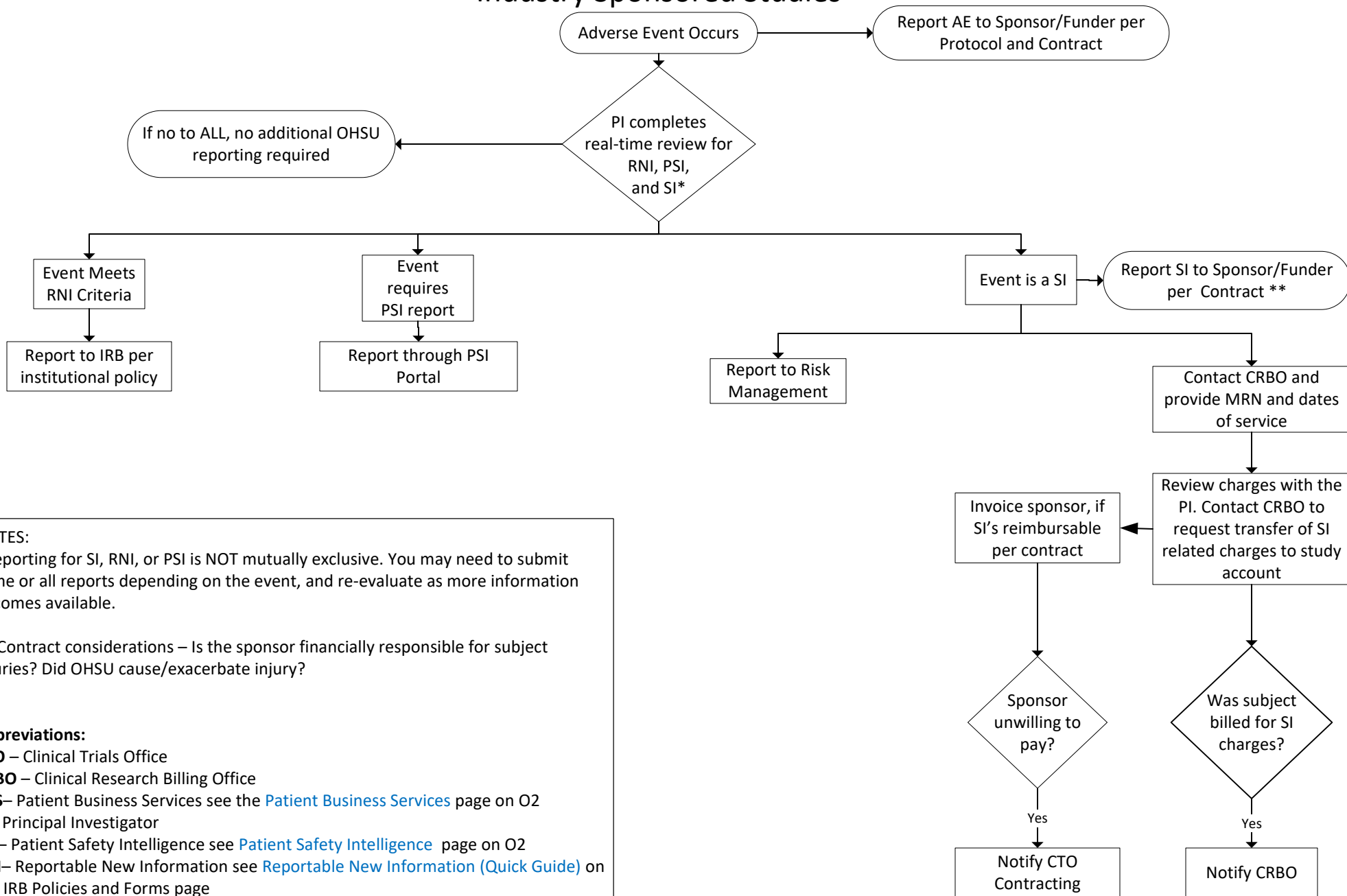


# Industry Sponsored Studies



**NOTES:**  
 \*Reporting for SI, RNI, or PSI is NOT mutually exclusive. You may need to submit some or all reports depending on the event, and re-evaluate as more information becomes available.

\*\* Contract considerations – Is the sponsor financially responsible for subject injuries? Did OHSU cause/exacerbate injury?

**Abbreviations:**  
**CTO** – Clinical Trials Office  
**CRBO** – Clinical Research Billing Office  
**PBS**– Patient Business Services see the [Patient Business Services](#) page on O2  
**PI**– Principal Investigator  
**PSI**– Patient Safety Intelligence see [Patient Safety Intelligence](#) page on O2  
**RNI**– Reportable New Information see [Reportable New Information \(Quick Guide\)](#) on the IRB Policies and Forms page  
**SI** –Subject Injury see [Research Injury Reporting](#) on CRBO forms and policies page  
**UMG**– University Medical Group see the [University Medical Group](#) page on O2